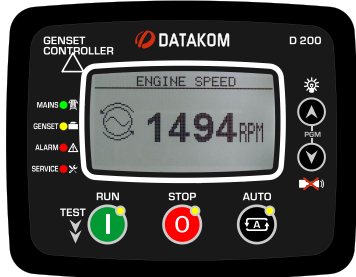


D-200

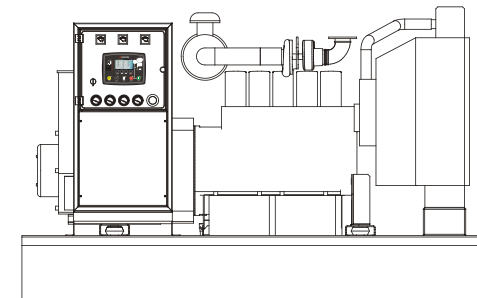
INTERNET ENABLED GENSET CONTROLLER

MULTIFUNCTIONAL

THE SAME UNIT IS A ...



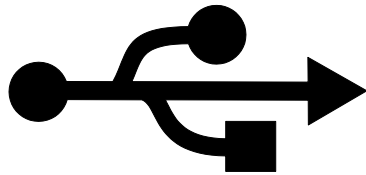
- ☐ AMF UNIT
- ☐ ATS CONTROLLER
- ☐ REMOTE START CONTROLLER
- ☐ ENGINE CONTROLLER



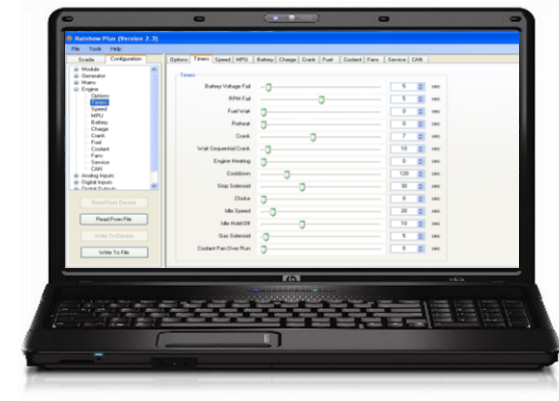
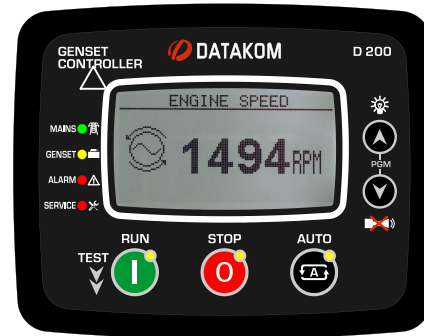
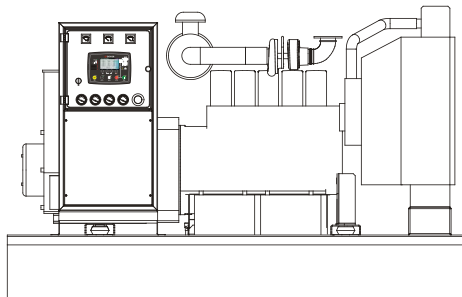
REDUCE YOUR STOCK ITEMS !



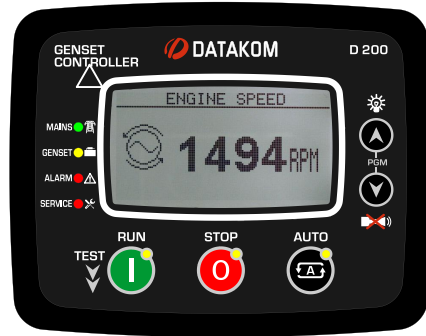
EASY PROGRAMMING



- ❑ EASY TO USE PC CONFIGURATION PROGRAM: RAINBOW PLUS
- ❑ PC PROGRAM CONNECTS THROUGH USB
- ❑ REMOTE PARAMETER SETTING THROUGH INTERNET
- ❑ ALL PARAMETERS FRONT PANEL ADJUSTABLE
- ❑ DETAILED TRAINING MATERIAL

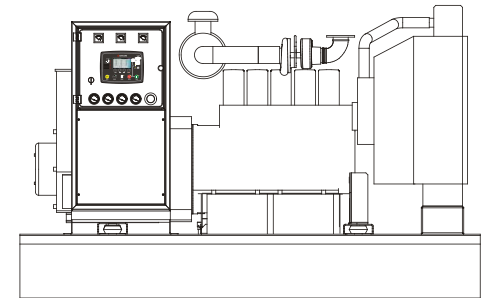
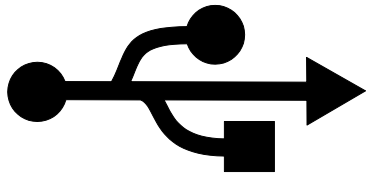


DATA PORTS



☐ INTERNAL GPRS MODEM

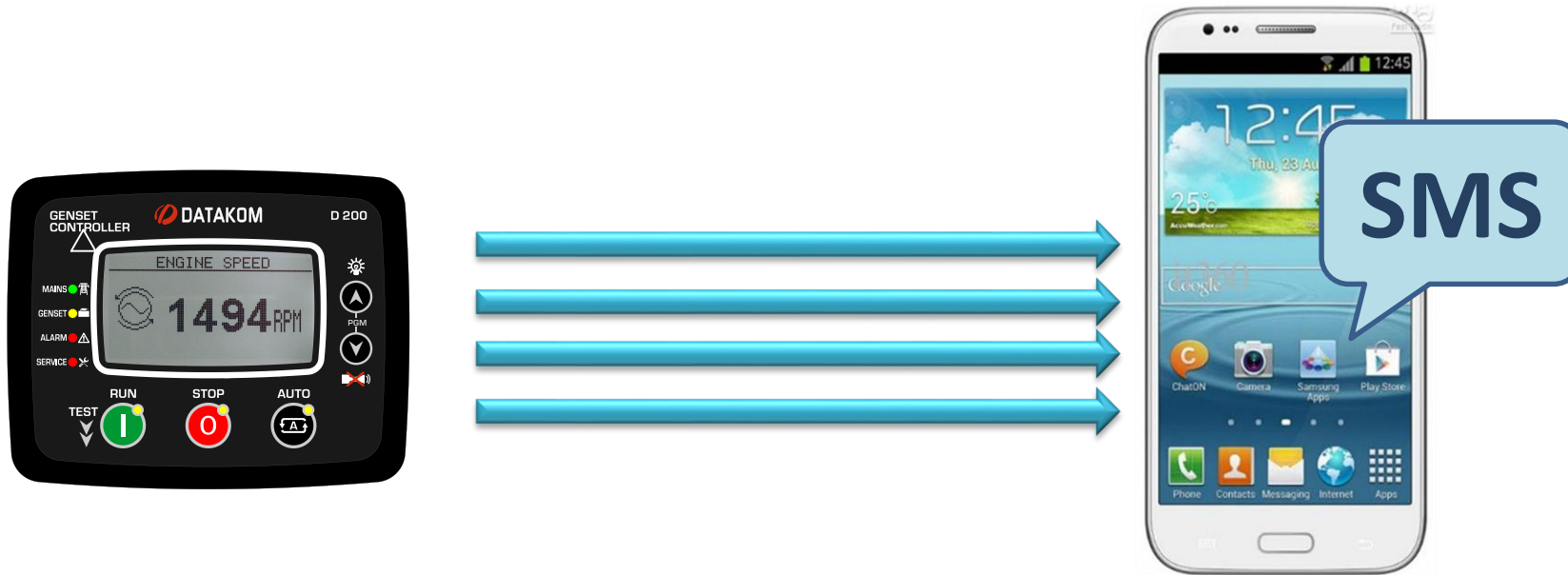
☐ USB DEVICE (PC CONNECTION)



CONNECTION CAPABILITIES



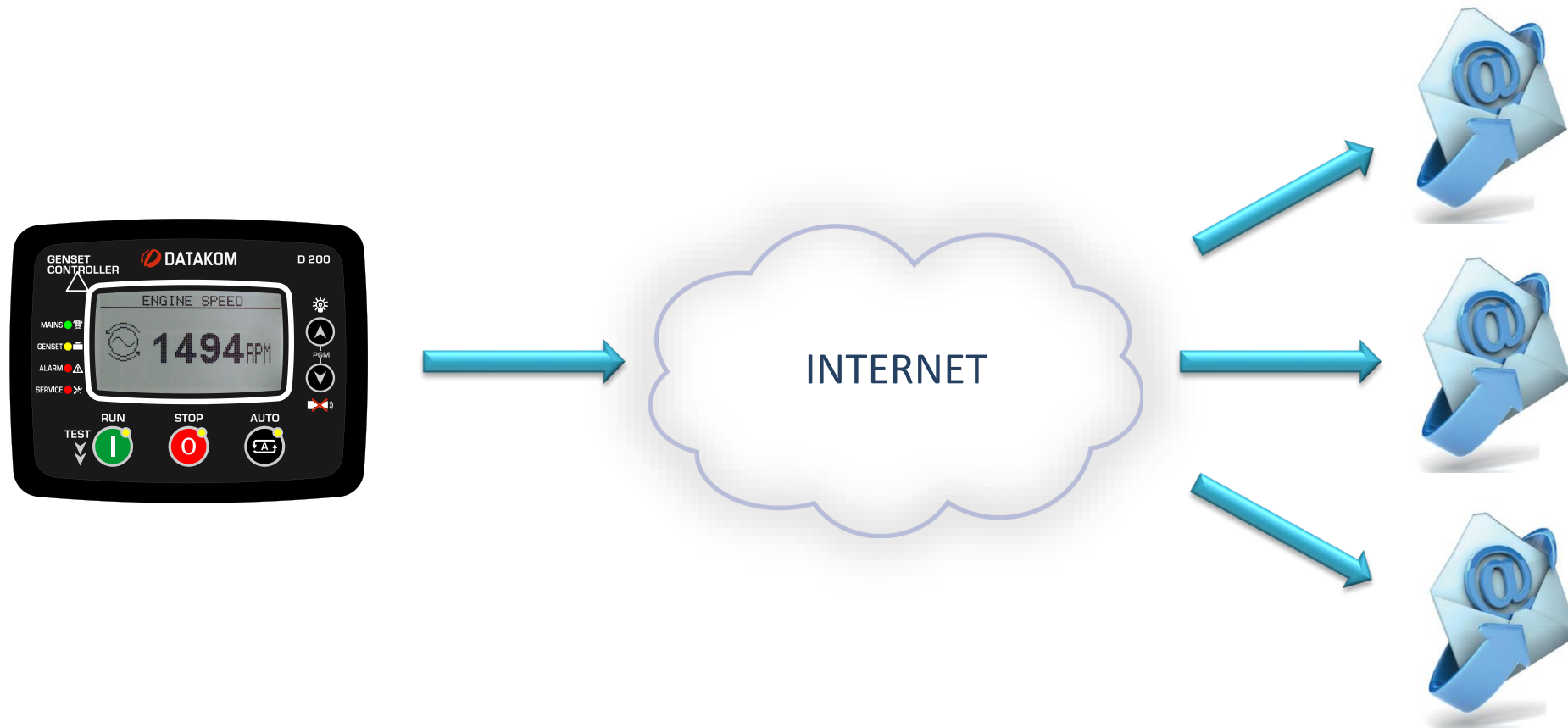
SMS SENDING



UP TO 4 DIFFERENT PHONE NUMBERS ALLOWED



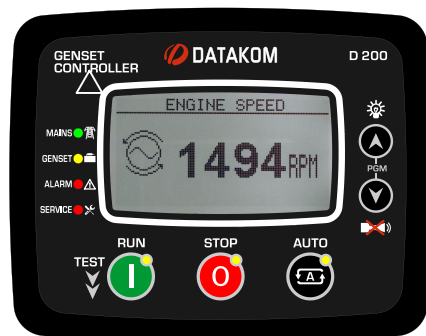
E-MAIL SENDING



UP TO 3 DIFFERENT E-MAIL ADDRESSES ALLOWED



INTERNET FEATURES



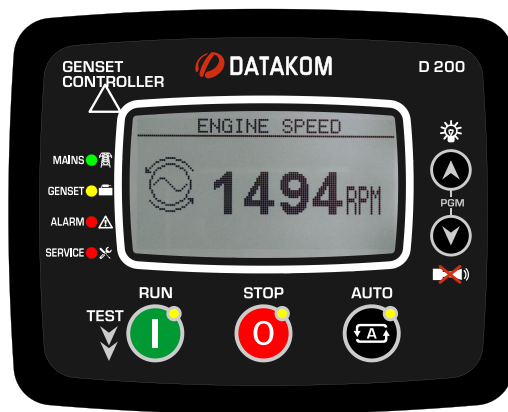
- ☐ PARAMETER SETTING THROUGH INTERNET
- ☐ CENTRAL MONITORING THROUGH INTERNET
- ☐ E-MAIL SENDING



REMOTE MONITORING



INTERNET CONNECTION



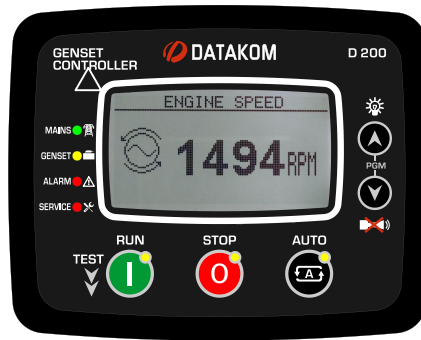
CONTROLLER

INTERNAL GPRS MODEM



EASY INSTALLATION - GPRS

GPRS CONNECTION SUPPORTS DYNAMIC IP AND LOCAL IP !



CONTROLLER

GPRS MODEM



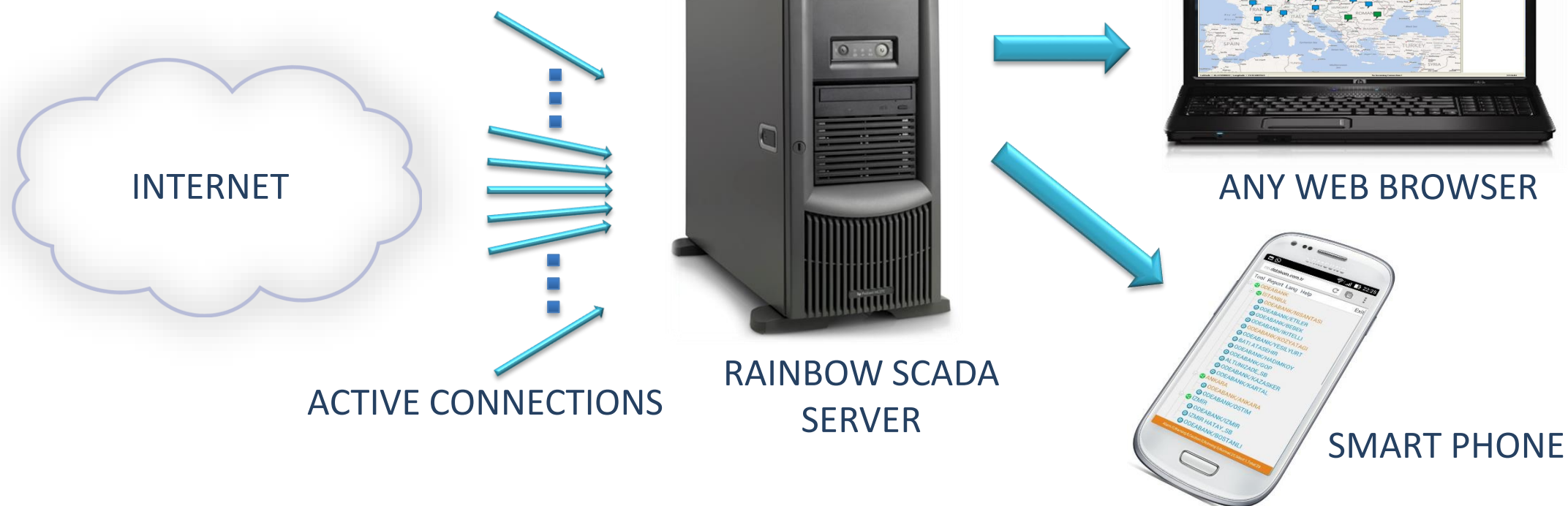
RAINBOW SCADA
SERVER

- NO REAL IP REQUIRED
- NO STATIC IP REQUIRED
- NO DATA SERVER REQUIRED
- PLUG & PLAY WITH ANY DATA SIM CARD



RAINBOW SCADA PROGRAM

PROGRAM RUNS ON SERVER

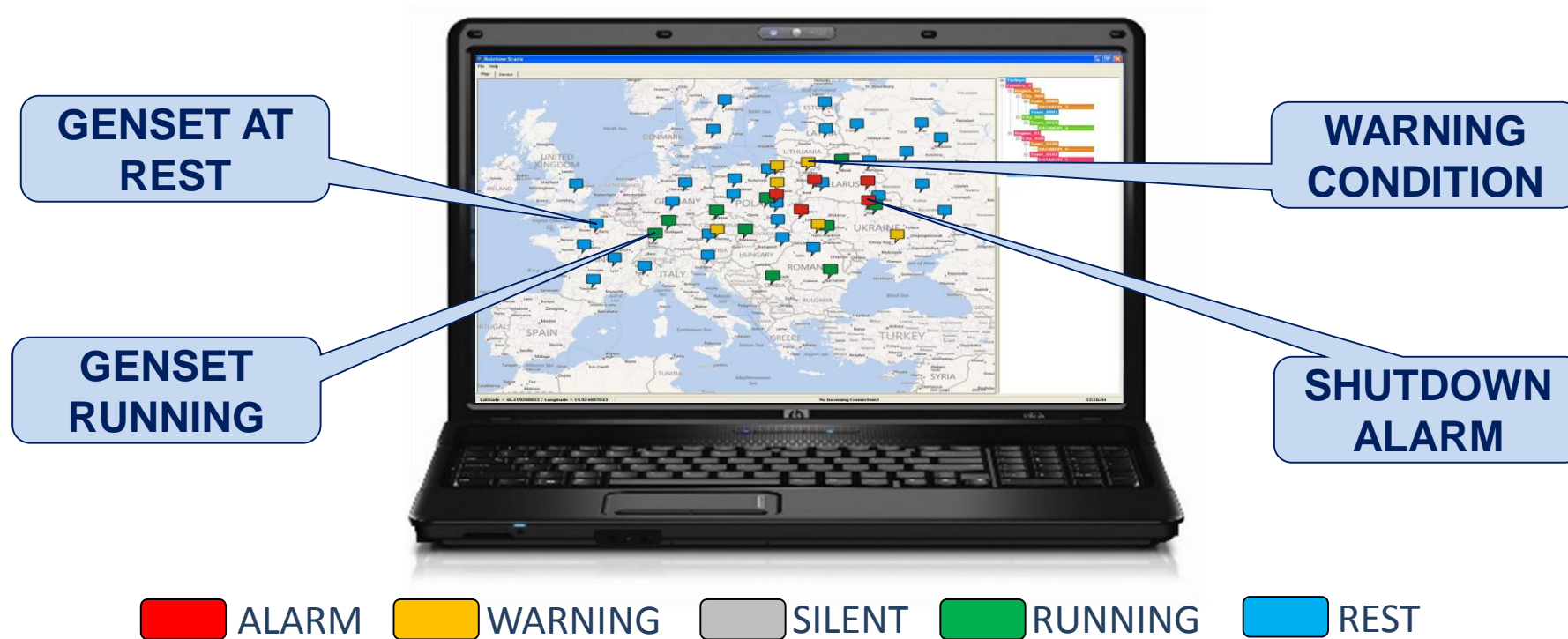


RAINBOW SCADA SERVER SUPPORTS 60'000 ACTIVE CONNECTIONS



CHART MODE DISPLAY

MONITOR YOUR COMPLETE FLEET ON ONE SCREEN

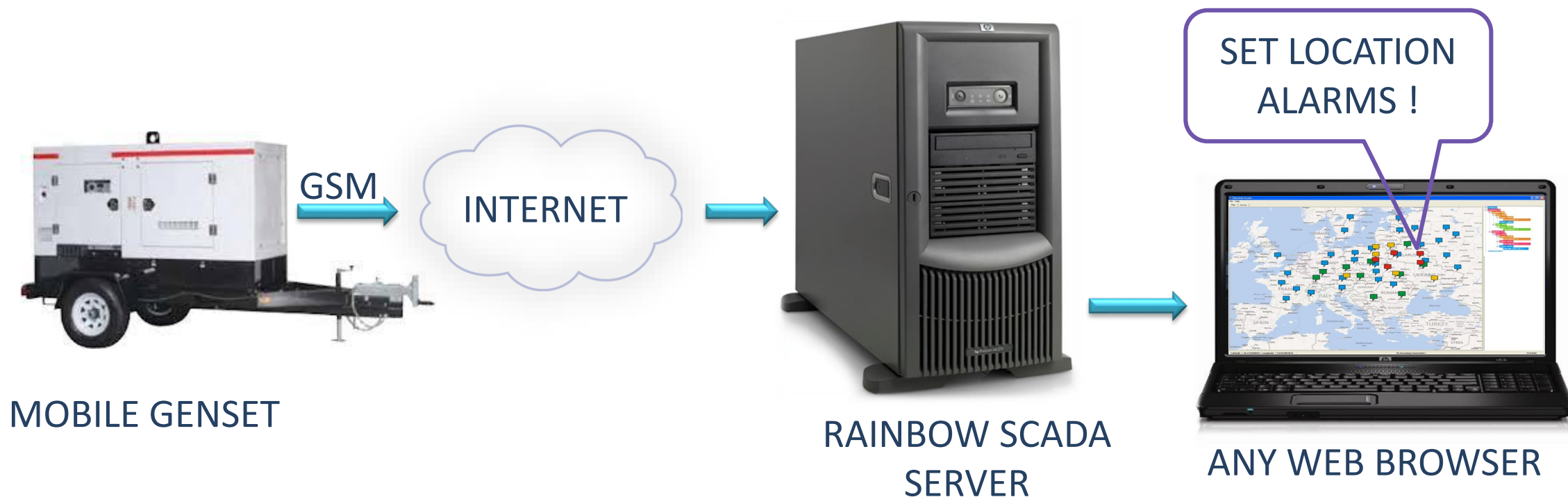


THE COLOUR OF THE BOX SHOWS DEVICE STATUS !



MOBILE GENSET SUPPORT

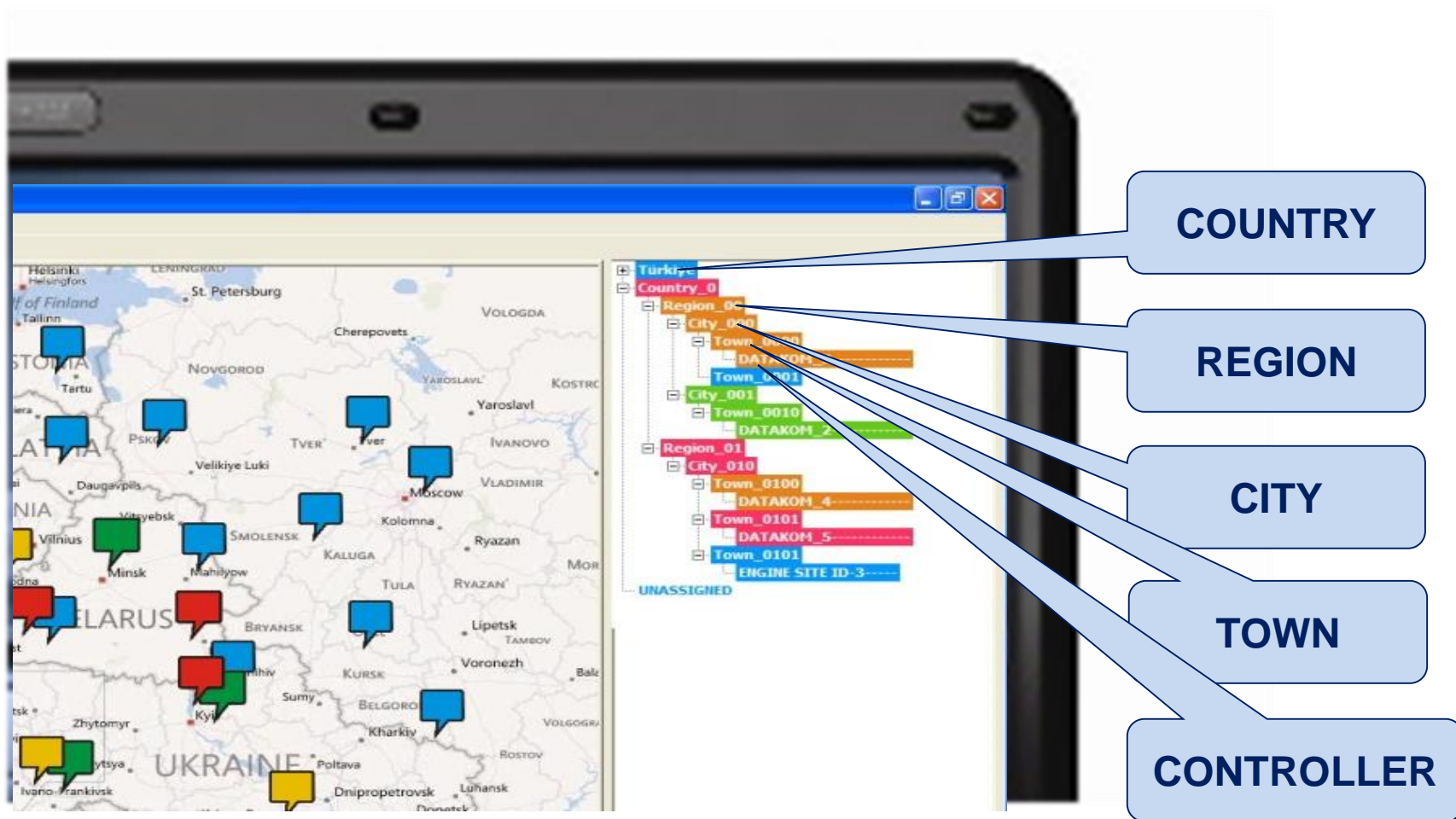
LOCATION DETERMINATION OVER GSM NETWORK



MONITOR YOUR MOBILE FLEET ON-LINE !



GROUPING OF GENSETS



TABLET PC & SMART PHONE SUPPORT



CREATE YOUR OWN ACCOUNT

Rainbow Scada Login

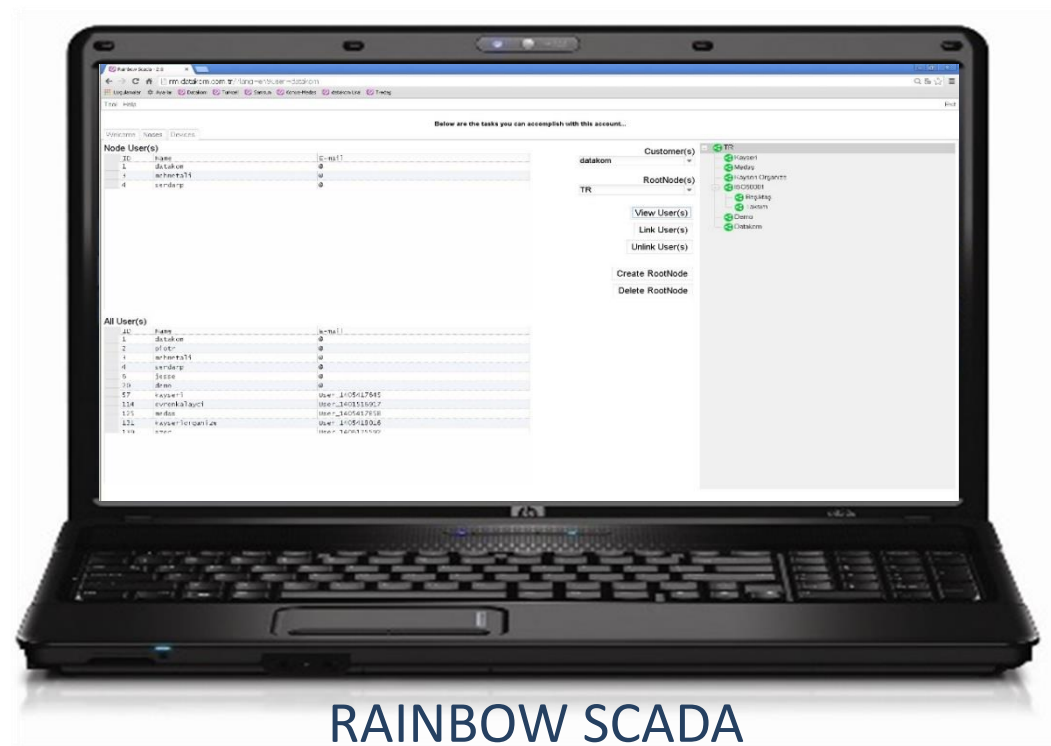
datakom

••••••

Login

Manage

LOGIN AND USE
«MANAGE»
OPTION



RAINBOW SCADA
MANAGING SCREEN

NO NEED TO WAIT FOR SUPPORT



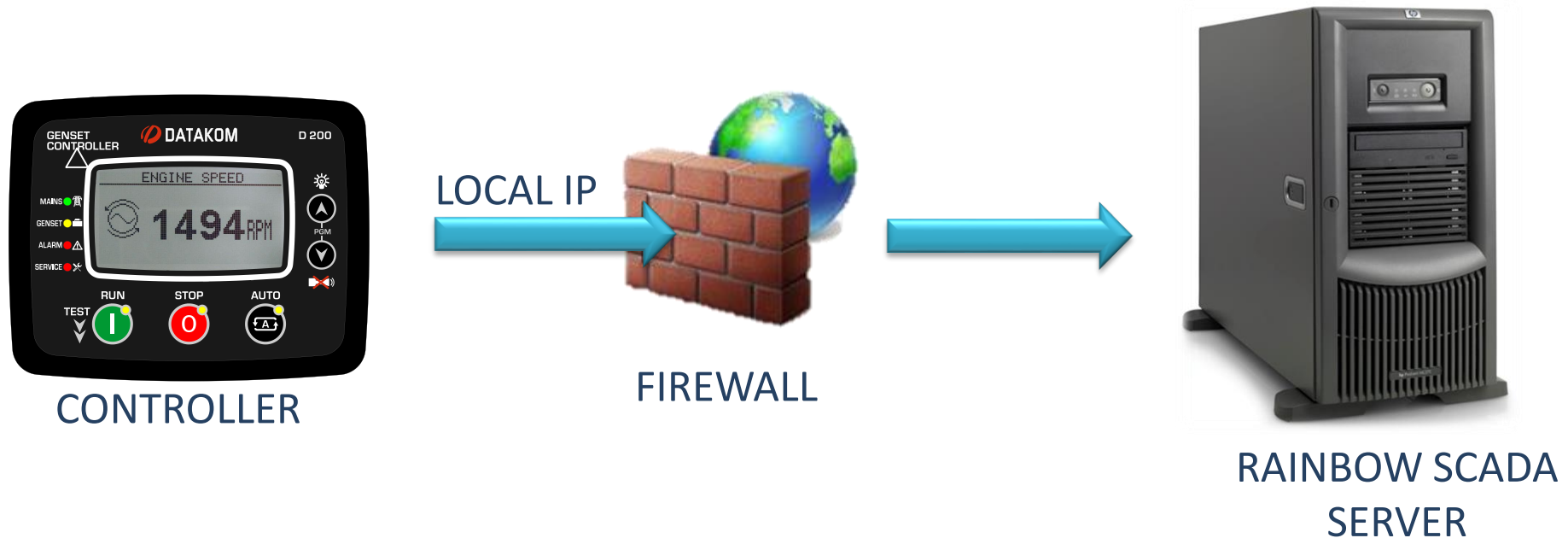
CREATE YOUR OWN SUB_USERS

RAINBOW SCADA SERVER



DATA SECURITY

DATA IS SENT TO RAINBOW SCADA SERVER ONLY !

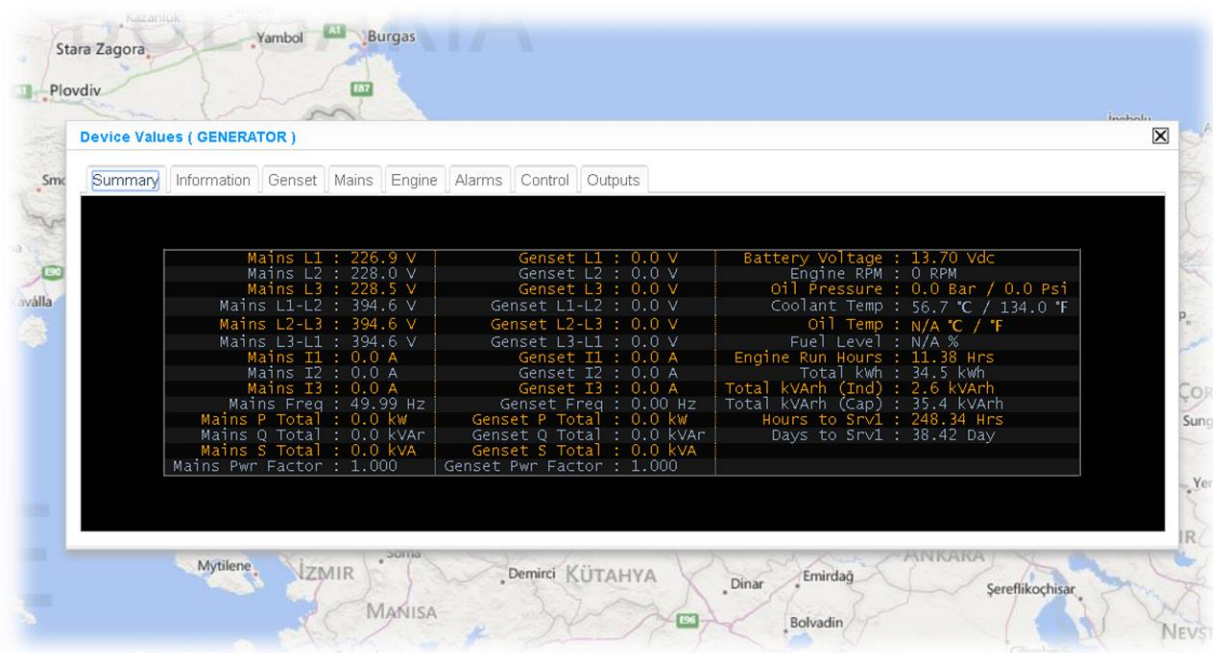


NOBODY CAN REACH YOUR CONTROLLER !



DETAIL MONITORING

MONITOR ONLINE & REAL TIME

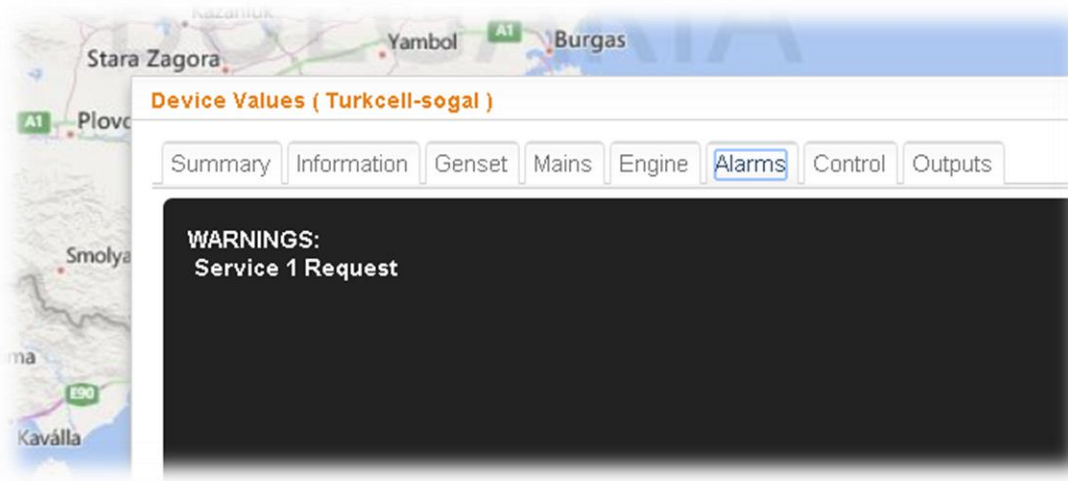


MONITOR WITH PC, TABLET OR SMARTPHONE



REMOTE ALARM MONITORING

MONITOR ONLINE & REAL TIME

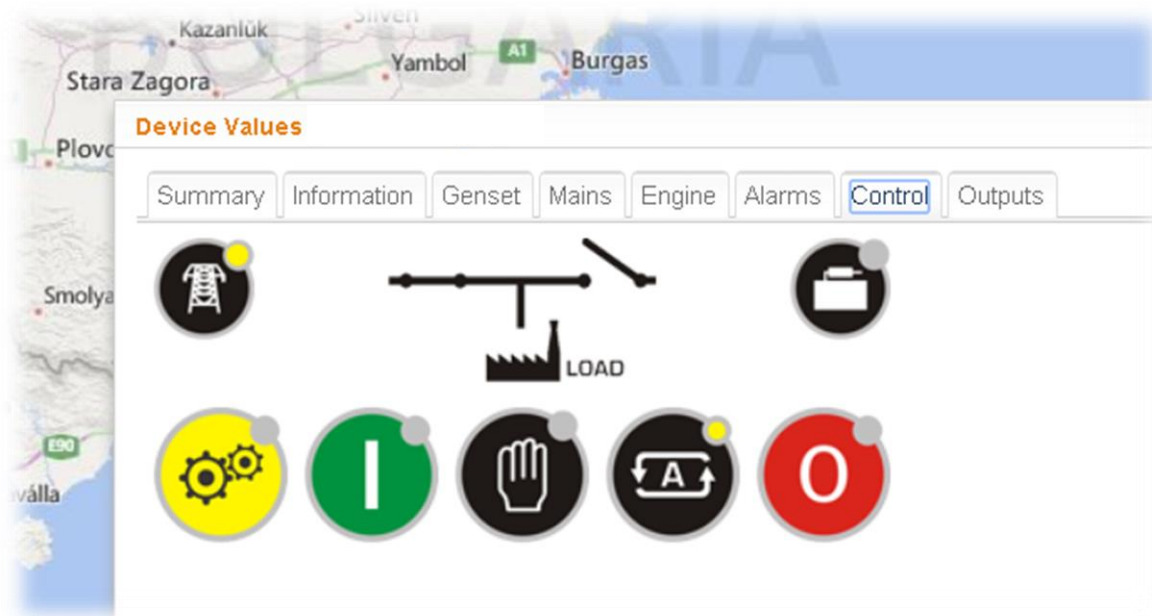


MONITOR WITH PC, TABLET OR SMARTPHONE



REMOTE CONTROL & REMOTE FAULT RESET

RESET ALARMS ONLINE & REAL TIME

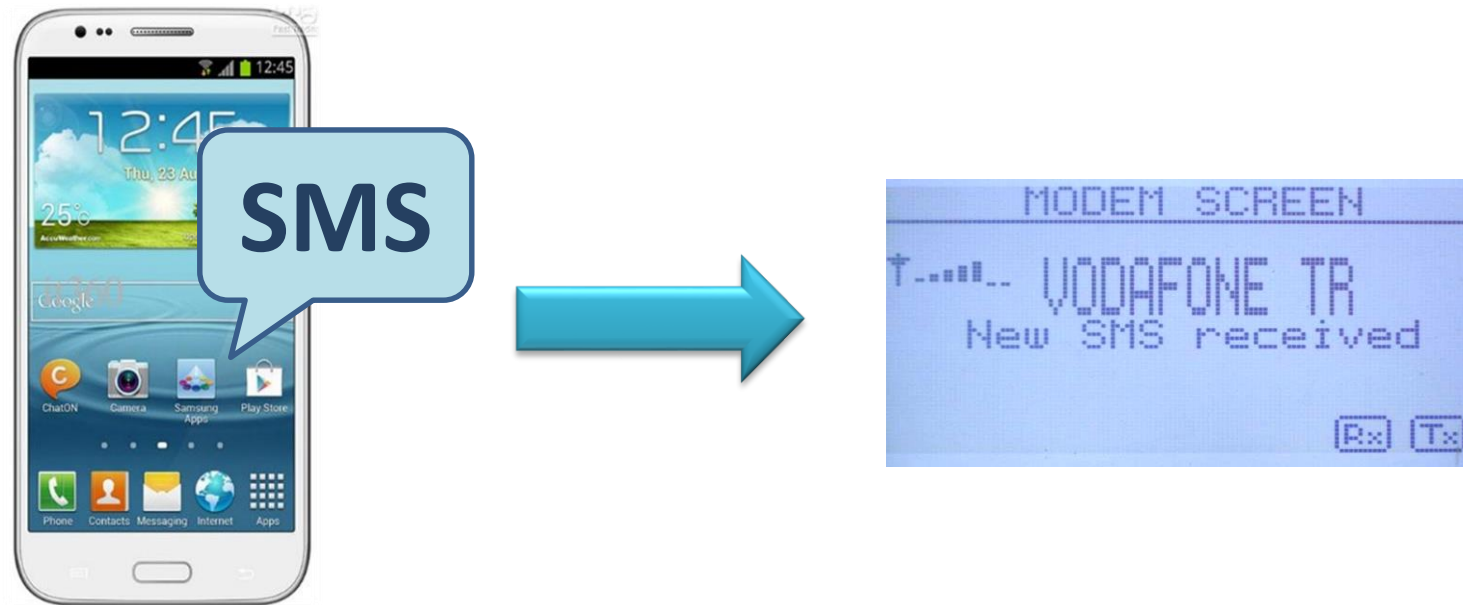


RESET ALARMS WITH PC, TABLET OR SMARTPHONE



REMOTE FAULT RESET VIA SMS

YOUR CRITICAL SITE IS ALWAYS UP !

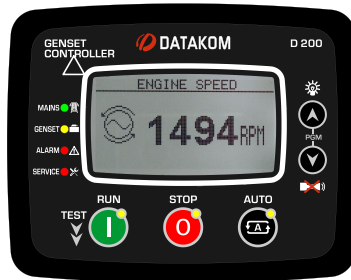


RESET ALARMS !



REMOTE PARAMETER EDIT

CONTROLLER

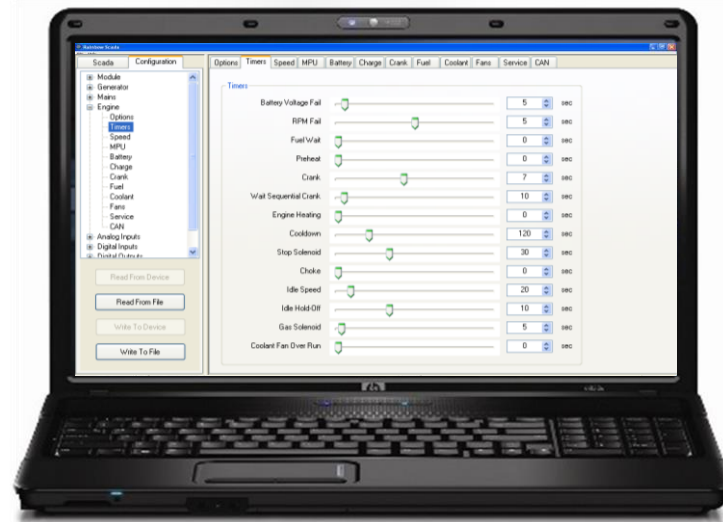


INTERNET

RAINBOW
SCADA
SERVER



RAINBOW PLUS
PROGRAM

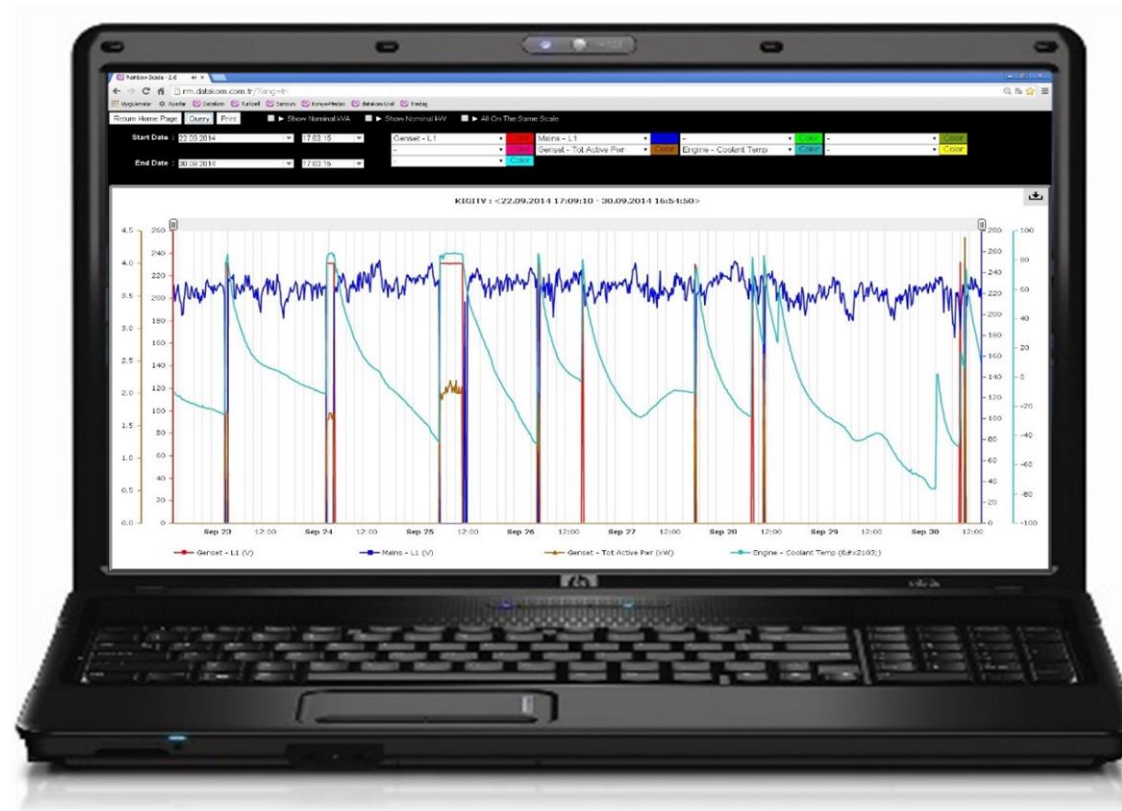


SAVE TIME AND SERVICE COST



DATA ANALYSIS

PAST DATA IS STORED ON SERVER !



DATA CAN BE SAVED AS:

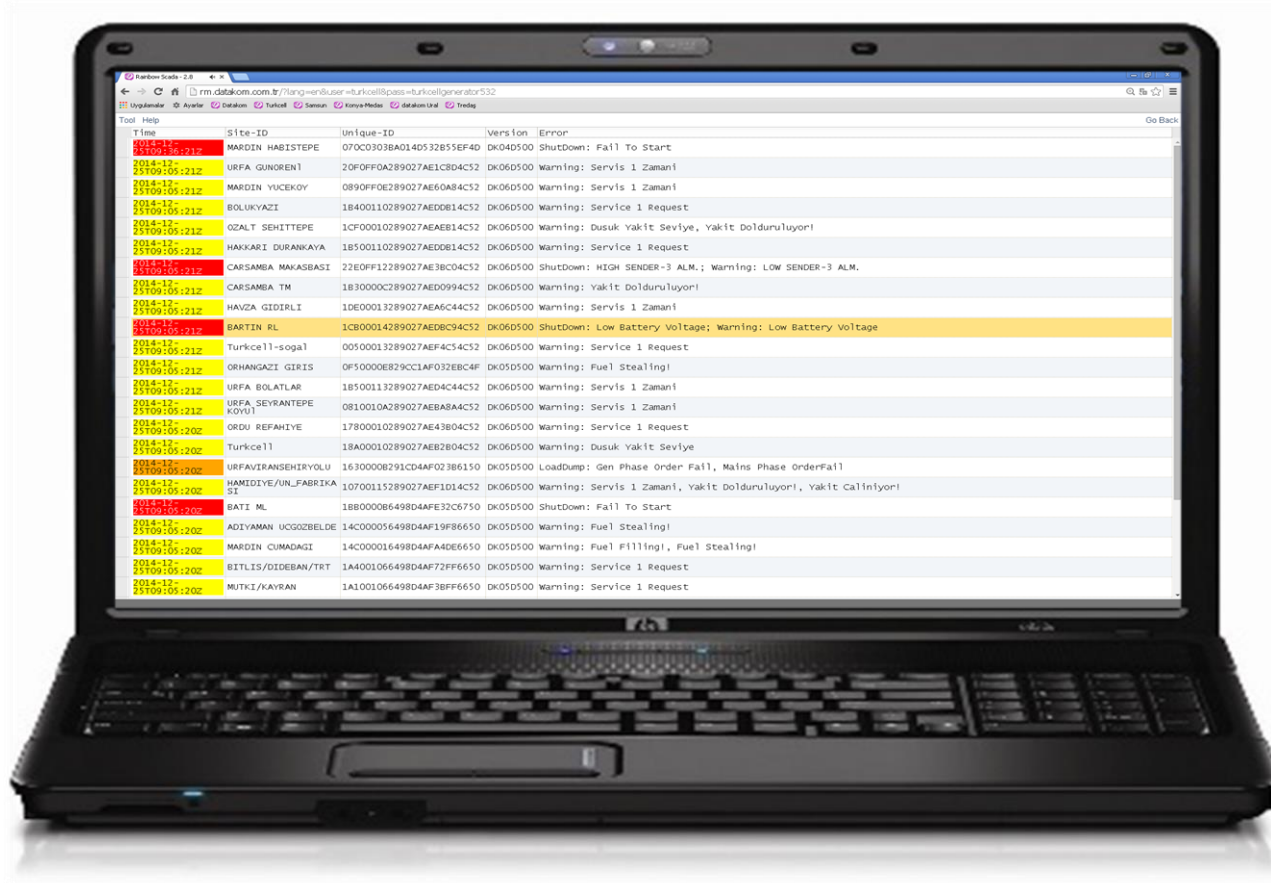
- **JPG FILES**
- **EXCEL FILES**

ANALYSE PAST PERFORMANCE OF YOUR SYSTEM !



ONLINE ALARM MANAGEMENT

DESIGNED FOR CONTROL CENTERS

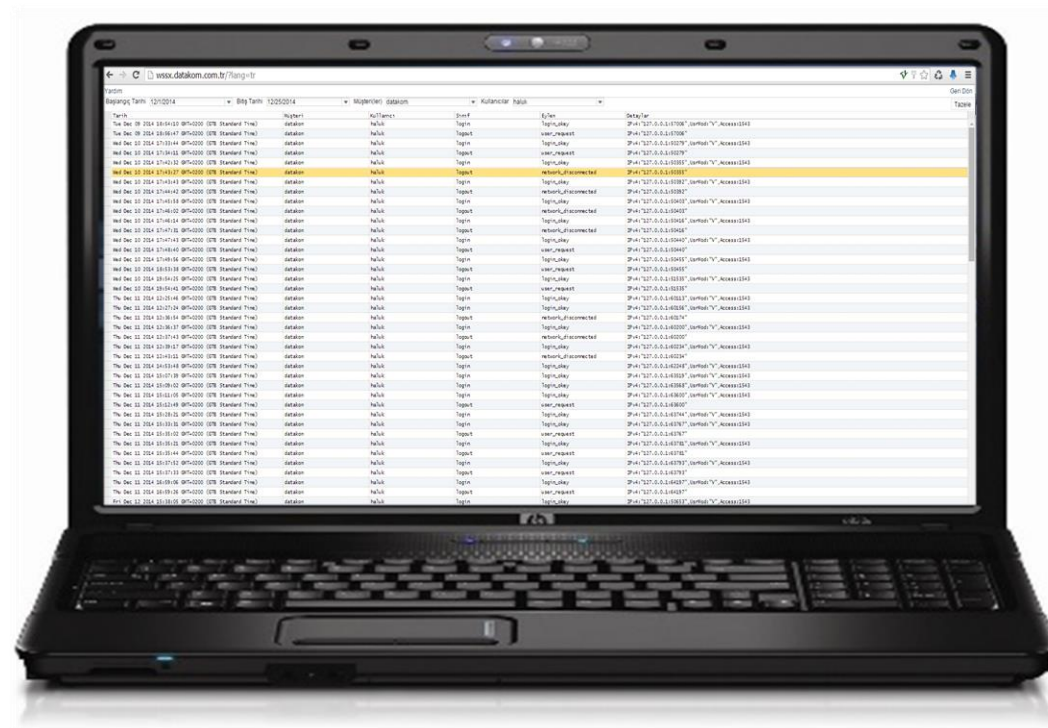


ALARM HISTORY IS
RECORDED INTO
DATABASE



CUSTOMER LOGIN HISTORY RECORDING

MONITOR SUB-USER ACTIVITIES



The laptop screen shows a web application interface with a table of login history. The table has columns for 'Tanggal' (Date), 'User', 'Status', 'Detail', and 'Detail'. The data is organized into a grid with multiple rows and columns. The table is titled 'Login History' and contains a list of login attempts, including successful logins, failed logins, and logouts. The table is sorted by 'Tanggal' (Date) in descending order. The table has a header row with the following columns: 'Tanggal', 'User', 'Status', 'Detail', and 'Detail'. The table contains 10 rows of data. The first row shows a login attempt on 2024-12-10 at 10:10:10, with the user 'user1', status 'Success', and details 'User logged in successfully'. The second row shows a login attempt on 2024-12-10 at 10:10:15, with the user 'user1', status 'Success', and details 'User logged in successfully'. The third row shows a login attempt on 2024-12-10 at 10:10:20, with the user 'user1', status 'Success', and details 'User logged in successfully'. The fourth row shows a login attempt on 2024-12-10 at 10:10:25, with the user 'user1', status 'Success', and details 'User logged in successfully'. The fifth row shows a login attempt on 2024-12-10 at 10:10:30, with the user 'user1', status 'Success', and details 'User logged in successfully'. The sixth row shows a login attempt on 2024-12-10 at 10:10:35, with the user 'user1', status 'Success', and details 'User logged in successfully'. The seventh row shows a login attempt on 2024-12-10 at 10:10:40, with the user 'user1', status 'Success', and details 'User logged in successfully'. The eighth row shows a login attempt on 2024-12-10 at 10:10:45, with the user 'user1', status 'Success', and details 'User logged in successfully'. The ninth row shows a login attempt on 2024-12-10 at 10:10:50, with the user 'user1', status 'Success', and details 'User logged in successfully'. The tenth row shows a login attempt on 2024-12-10 at 10:10:55, with the user 'user1', status 'Success', and details 'User logged in successfully'.

Tanggal	User	Status	Detail	Detail
2024-12-10 10:10:10	user1	Success	User logged in successfully	
2024-12-10 10:10:15	user1	Success	User logged in successfully	
2024-12-10 10:10:20	user1	Success	User logged in successfully	
2024-12-10 10:10:25	user1	Success	User logged in successfully	
2024-12-10 10:10:30	user1	Success	User logged in successfully	
2024-12-10 10:10:35	user1	Success	User logged in successfully	
2024-12-10 10:10:40	user1	Success	User logged in successfully	
2024-12-10 10:10:45	user1	Success	User logged in successfully	
2024-12-10 10:10:50	user1	Success	User logged in successfully	
2024-12-10 10:10:55	user1	Success	User logged in successfully	

LOGIN HISTORY IS
RECORDED INTO
DATABASE

HELPS TO INCREASE SECURITY !



DETAILED REPORTING

ALLOWS TIME-FRAMED REPORTING OF SELECTED PARAMETERS

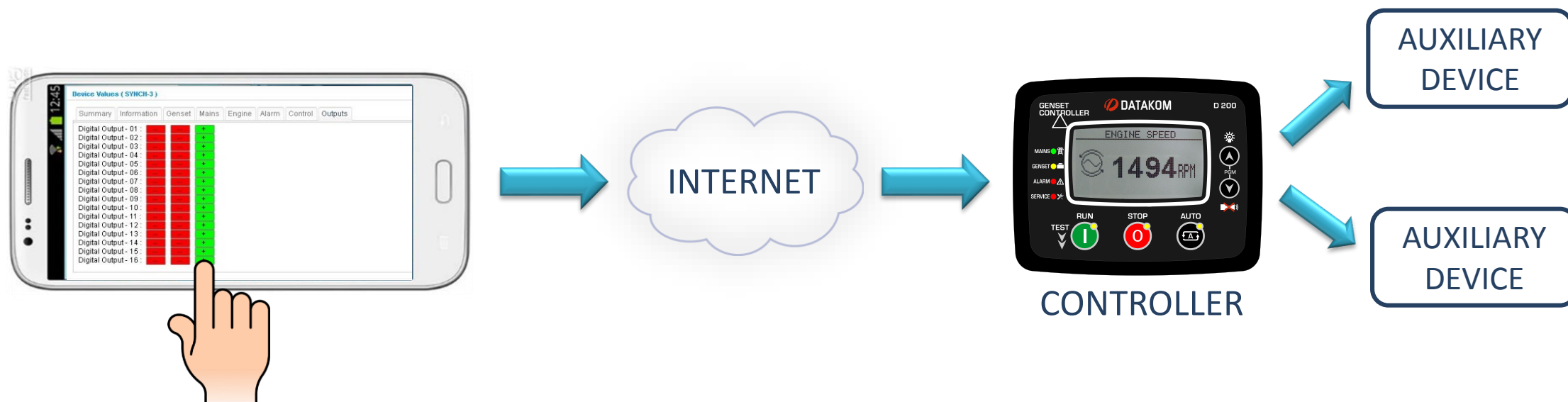


- FUEL CONSUMPTION REPORTS
- kW/fuel EFFICIENCY REPORTS
- POWER GENERATION REPORTS
- POWER CONSUMPTION REPORTS
- AVERAGE VALUES
- MIN-MAX VALUES

PROVIDES HELP FOR BETTER MANAGEABILITY OF YOUR FLEET !



REMOTE CONTROL OF AUXILIARY DEVICES

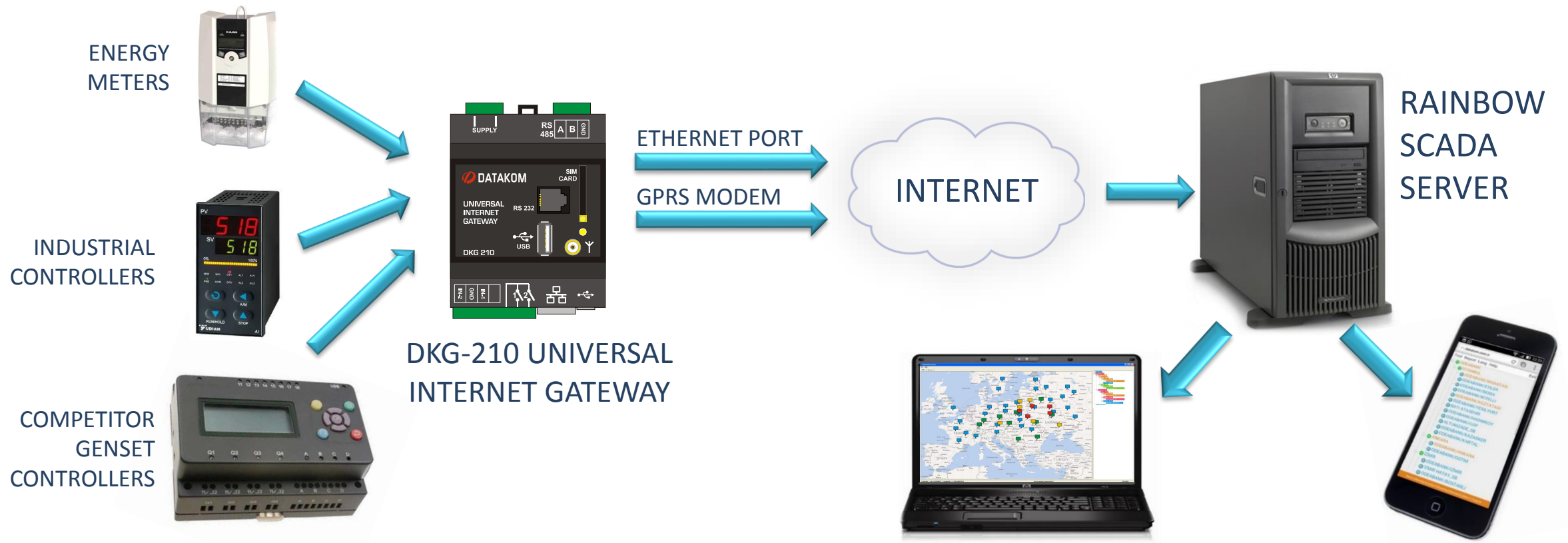


MONITOR ALL DATAKOM PRODUCTS



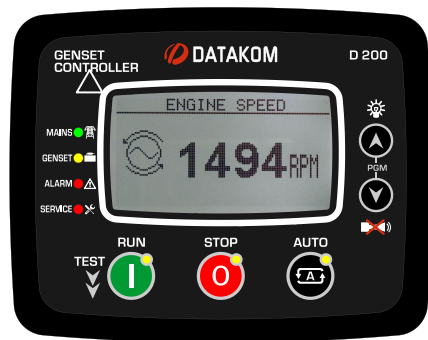
INTEGRAL APPROACH

MONITOR THIRD PARTY & COMPETITOR PRODUCTS



COST ADVANTAGE

MONITOR YOUR SYSTEM WITH LOWER DATA COST !



CONTROLLER



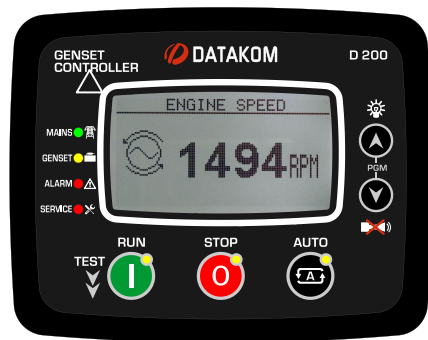
RAINBOW SCADA
SERVER

- CONTROLLERS CONNECT AUTOMATICALLY
- NO NEED TO QUERY THE CONTROLLER
- ALL DATA IS SENT IN A SINGLE IP PACKET



COST ADVANTAGE

EACH CONTROLLER COMES WITH 2 YEARS FREE MONITORING



- 2 YEARS FREE MONITORING
- 6 MONTHS FREE REMOTE CONTROL
- 6 MONTHS FREE REMOTE PARAMETER EDIT
- 6 MONTHS FREE DATA ANALYSIS



IMMEDIATE FAULT DETECTION

REDUCE CUSTOMER'S DOWN TIME WITH FASTER INTERVENTION



YES !



NO !

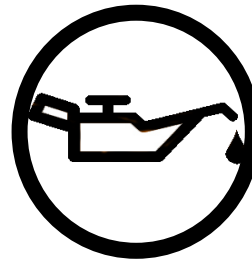


FAULT SENSING BEFORE FAILURE

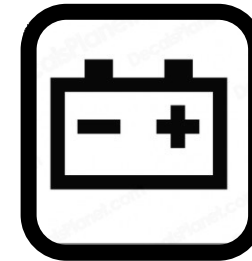
GENERATE ALERTS BEFORE THEY BECOME EMERGENCIES



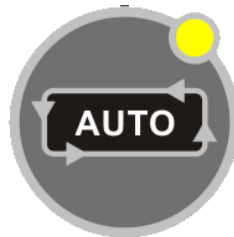
LOW FUEL



LOW OIL



LOW BATTERY



NOT IN AUTO

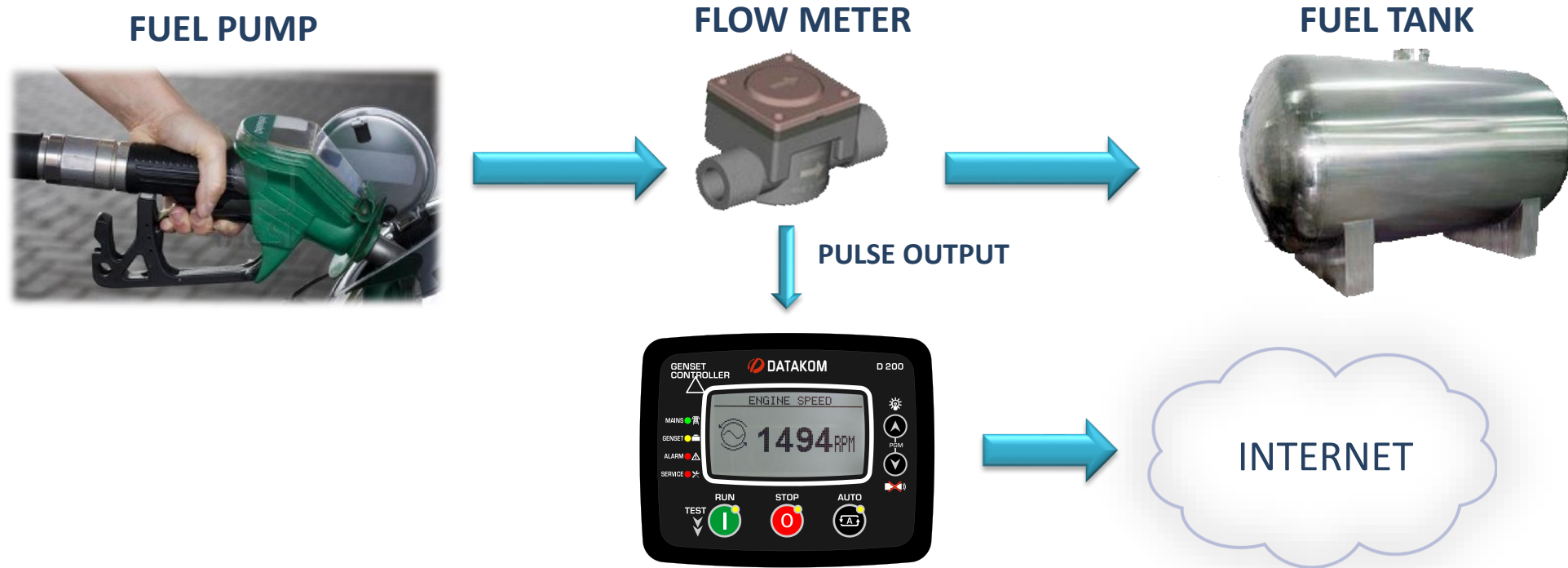


SERVICE REQUEST



REMOTE FUEL FILLING MONITORING

CONTROLLER COUNTS FLOW METER PULSES

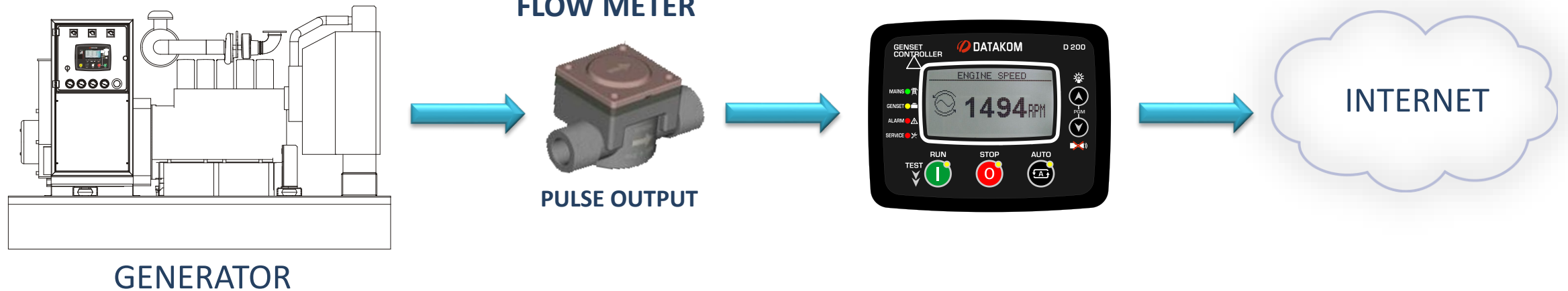


SAVE YOUR MONEY BY ELIMINATING FUEL FILLING FRAUDS !



FUEL CONSUMPTION MONITORING

CONTROLLER COUNTS FLOW METER PULSES

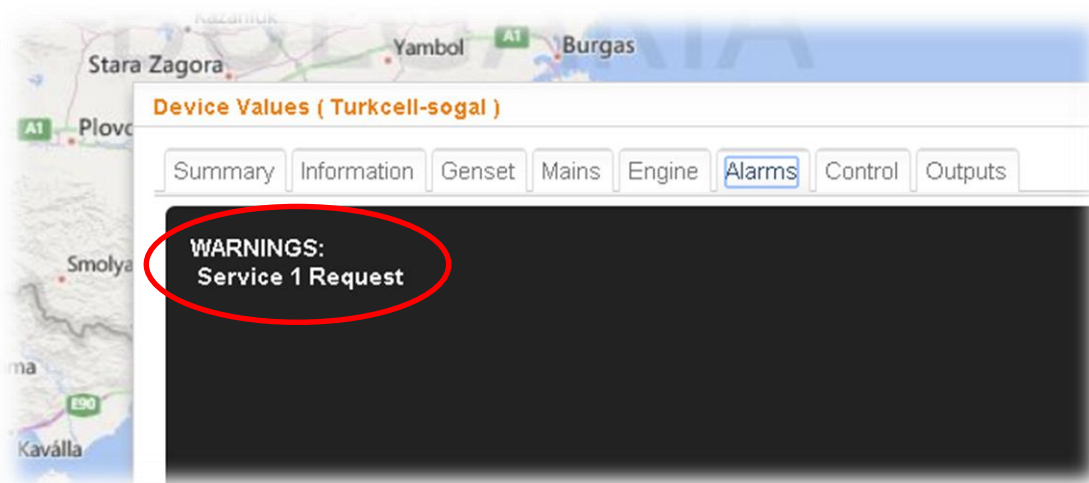
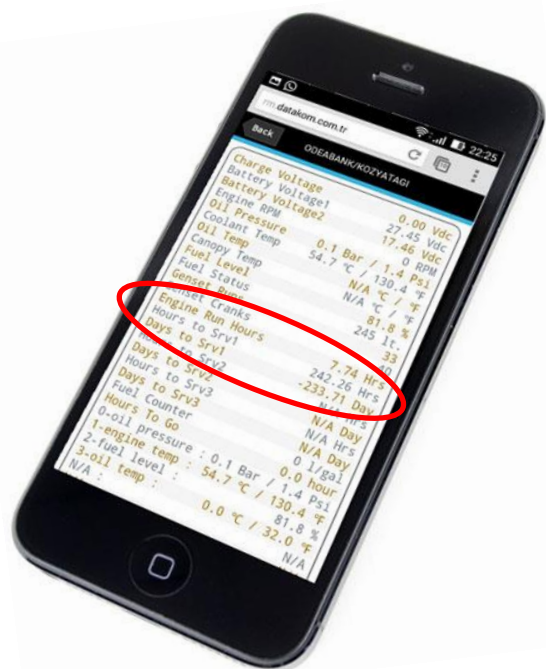


MONITOR YOUR GENSET'S kw/FUEL EFFICIENCY



REMOTE SERVICE MONITORING

REDUCE YOUR SPARE PARTS COST BY SERVICE PLANNING !



AVOID UNNECESSARY SERVICE VISITS



LESS MANPOWER FOR SERVICE

AVOID UNNECESSARY SITE VISITS



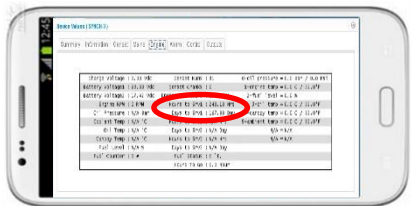
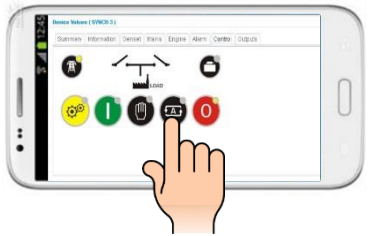
NO !



YES !



ADVANTAGES



- ❑ GENERATE ALERTS BEFORE THEY BECOME EMERGENCIES
- ❑ RESET FAULTS FROM YOUR CONTROL ROOM
- ❑ TEST YOUR GENSET FROM YOUR CONTROL ROOM
- ❑ REDUCE YOUR DOWN TIME WITH FASTER INTERVENTION
- ❑ AVIOD UNNECESSARY SITE VISITS
- ❑ REDUCE YOUR SPARE PART COST BY SERVICE PLANNING
- ❑ ELIMINATE FUEL THEFT
- ❑ ELIMINATE ENERGY THEFT
- ❑ ELIMINATE FUEL FILLING FRAUDS
- ❑ HAVE YOUR CRITICAL SITE ALWAYS UP
- ❑ HAVE DATA SECURITY
- ❑ INTEGRATE THIRD PARTY PRODUCTS IN THE SAME NETWORK
- ❑ CONTROL YOUR ENTIRE REMOTE STATION VIA D-300

